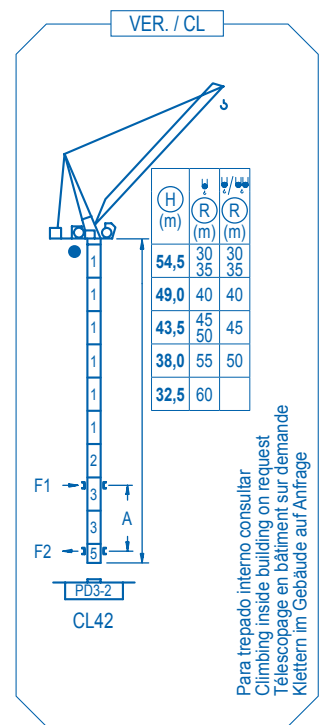
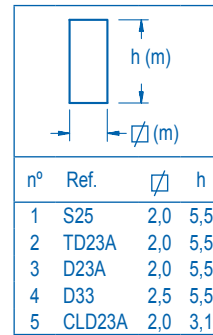
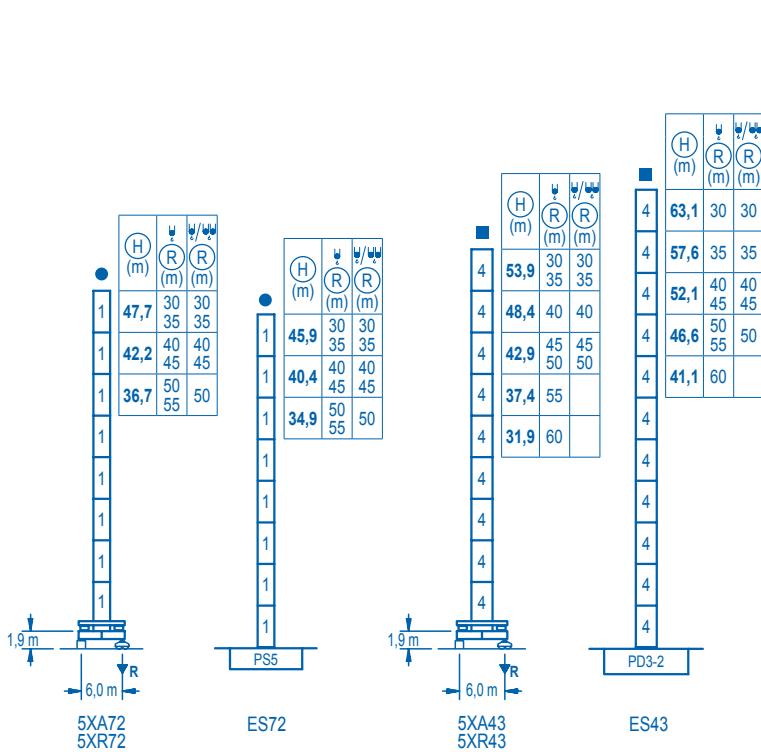


R	8550	6750	5300	4050	3150	2300	1550	
30	8300	6500	5050	3800	2900			m
35								kg
40								kg
45								kg
50								kg
55								kg
60								kg

R (m)	ψ	R _{Cmax} (m)	10	15	20	25	30	35	40	45	50	55	60	←(m) ↓(kg)
60		23,5			9000	7910	5550	4200	3310	2690	2220	1860	1550	
55		24,8		9000	8870	6430	4970	3990	3280	2740	2300			
50		25,9			9000	7110	5580	4540	3760	3150				
45		27,2			9000	7710	6070	4920	4050					
40		27,7			9000	8040	6460	5300						
35		28,8			9000	8490	6750							
30		29,0			9000	8550								

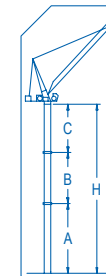
R (m)	ψ/ψ	R _{Cmax} (m)	10	15	20	25	30	35	40	45	50	55	60	←(m) ↓(kg)
60		-	-	-	-	-	-	-	-	-	-	-	-	
55		-	-	-	-	-	-	-	-	-	-	-	-	
50		12,3	18000	13720	9430	7100	5640	4640	3910	3350	2900			
45		11,7	18000	13530	9750	7560	6130	5130	4380	3800				
40		13,5	18000	15890	11370	8780	7100	5930	5050					
35		15,0		18000	12720	9750	7840	6500						
30		16,5		18000	14010	10530	8300							



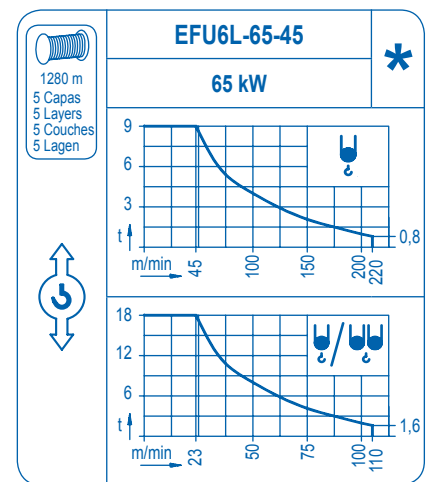
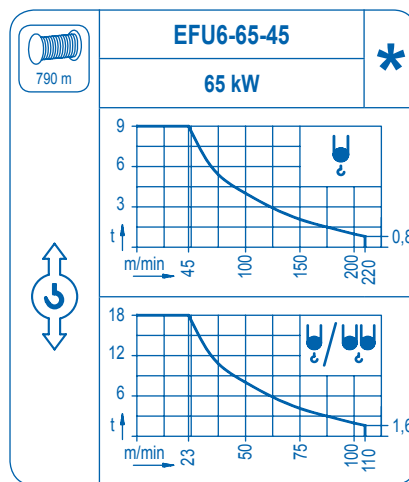
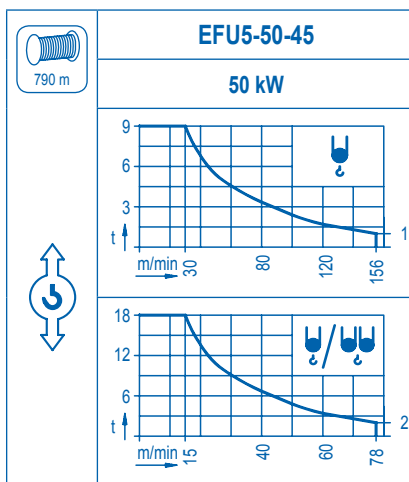
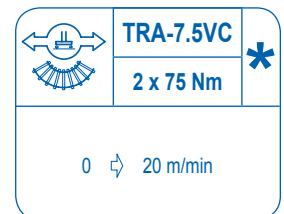
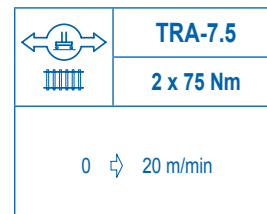
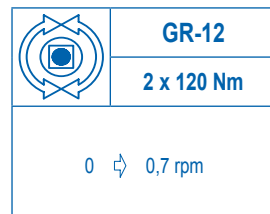
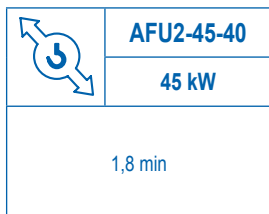
Para trepado interno consultar
Climbing inside building on request
Telescopage en bâtiment sur demande
Klettern im Gebäude auf Anfrage

R. máx.	En servicio In operation En service In Betrieb	5XR72.....111 t 5XR43.....119 t	R. máx.	Fuera de servicio Out of service Hors service Ausser Betrieb	5XR72.....144 t 5XR43.....167 t
----------------	---	------------------------------------	----------------	---	------------------------------------

Para otras zonas de viento o alturas superiores consultar
For other wind zones or additional hook heights on request
Pour d'autres zones de vent ou des hauteurs supplémentaires sur demande
Für andere Windzonen oder weiteren Hakenhöhen auf Anfrage



Alturas de arriostamiento consultar
Height of tie frames on request
Hauteurs d'ancrages a demande
Höhe der Abspannungen auf Anfrage



Tensión de alimentación Operating voltage Tension de service Betriebsspannung	400 V 3 ph 50 Hz
--	------------------------

Opcional Optional En option Kaufoption	*
---	---